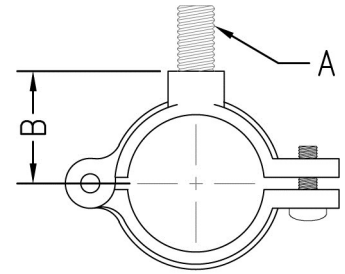


SPLIT RING HANGERS



FIG. 508R



Function: Designed for non-insulated stationary pipe lines in either a horizontal or vertical position. The hinged design allows for a quick installation.

Material: Malleable iron

Finish: Plain or electro-galvanized

Approvals: Complies with Federal Specification A-A-1192A (Type 12) and Manufacturers' Standardization Society ANSI/MSS SP-58 (Type 12) which supersedes ANSI/MSS SP-69.

Ordering: Specify figure number, pipe size, and finish.

Pipe Size		Bolt Thread A	B		Max. Rec. Load		Wt. Each	
					lbs.	kN	lbs.	kg
3/8	(10)	3/8	13/16	(20.64)	180	(0.80)	.13	(.06)
1/2	(15)	3/8	7/8	(22.23)	180	(0.80)	.14	(.06)
3/4	(20)	3/8	1	(25.40)	180	(0.80)	.16	(.07)
1	(25)	3/8	1 1/8	(28.58)	180	(0.80)	.18	(.08)
1 1/4	(32)	3/8	1 5/16	(33.34)	180	(0.80)	.22	(.10)
1 1/2	(40)	3/8	1 7/16	(36.51)	180	(0.80)	.38	(.17)
2	(50)	3/8	1 11/16	(42.86)	180	(0.80)	.44	(.20)
2 1/2	(65)	1/2	2 1/8	(53.98)	300	(1.33)	.45	(.20)
3	(80)	1/2	2 7/16	(61.91)	300	(1.33)	.55	(.25)
4	(100)	1/2	3	(76.20)	300	(1.33)	.95	(.43)

- THREADED ACCESSORIES
- CPVC STRAPS
- BAND HANGERS
- BEAM CLAMPS
- CLEVIS HANGERS
- PIPE ROLLER SUPPORTS
- SPLIT RING HANGERS
- PIPE CLAMPS
- CENTER LOAD BEAM CLAMPS
- PIPE SHIELDS, INSULATION, & SADDLES
- PIPE GUIDES & SLIDES
- WALL BRACKETS
- PIPE SUPPORTS
- STRUCTURAL ATTACHMENTS
- SEISMIC BRACING